

journeys
& places

Devonshire Square Concept Design



Background to Devonshire Square

Following an Experimental Traffic Order (ETO) and road closure in 2022, Devonshire Road underwent a temporary redesign to create a more welcoming community space for local residents, businesses and visitors.

This included a period of community engagement and a statutory consultation, following which the ETO was made permanent in February 2024.

Since then, local communities and businesses have been testing out the versatility of this space through delivering community markets, greening, outdoor dining and hospitality and public art.

At the community market held in Devonshire Square on Saturday 2 March 2024 we shared some early-stage designs and ideas with local residents, businesses and visitors, and gathered their feedback.

We have now progressed the designs further and would like to hear your views.



Community Feedback

- To create a collective space and foster a stronger sense of community
- The Square should have a clear identity: signage or another feature is needed to make the location recognisable
- The Square should be level, open, welcoming, easy to find and accessible
- The current uses of the Square should be expanded to include live entertainment, screenings of film and major sport events, and flower markets
- The Square should have more green areas and planting
- The Square should have permanent seating areas
- Water and electrical points are needed



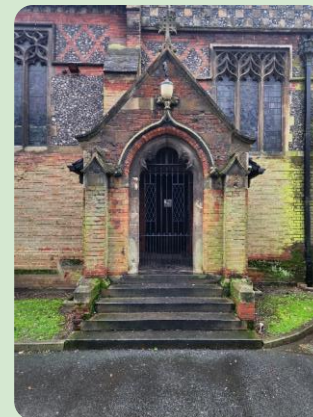
Design Inspiration

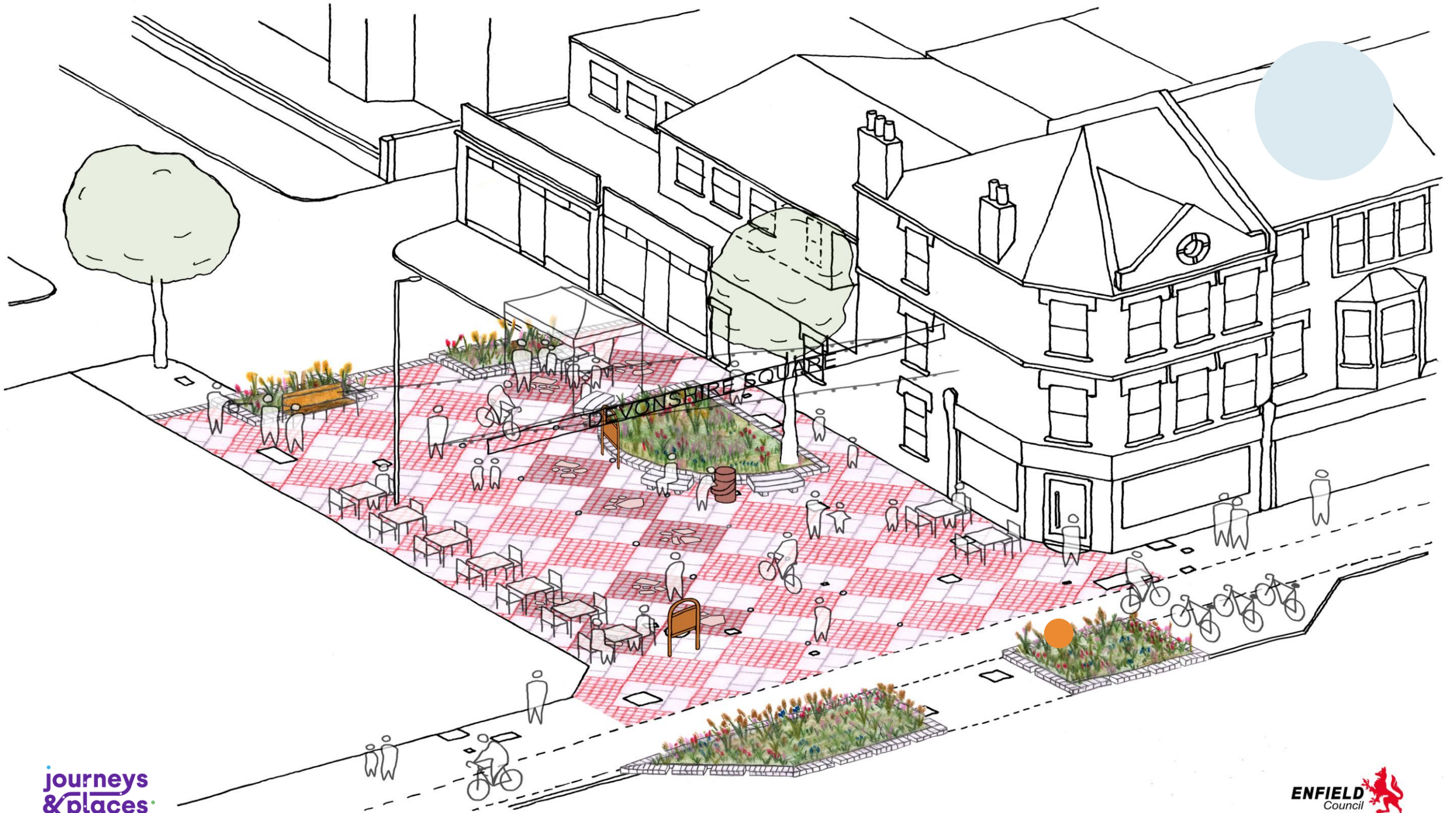
The material palette: the design is inspired by the eclectic mix of Victorian, Edwardian, early 20th century Arts & Craft heritage and architecture in Palmers Green, along with the more contemporary public art and local colours found in the Town Centre.

Drawing from Enfield's rich network of green and blue spaces, the design looks to maximise opportunities for greenery and biodiversity.

The planting palette: an approach of 'the right plant, right place' will be considered for each plant community including plants suitable for both semi-shade and full-sun conditions so that a simple horticultural management regime can be applied to ensure successful establishment and stewardship.

Relatively inexpensive features and animal refuges such as bird boxes, bat boxes and log walls can be creatively designed and appropriately integrated into the proposals, to improve the Square's habitat and biodiversity potential.





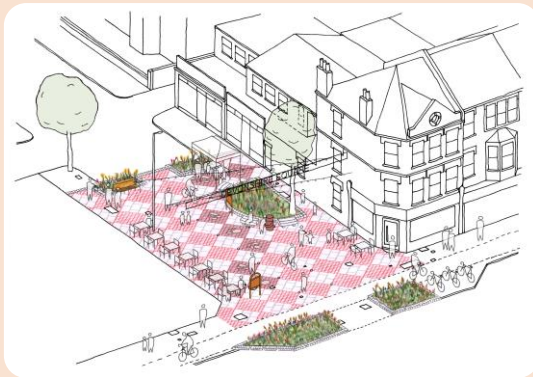
Devonshire Square Concept Design



The proposal seeks to provide a decorative and characterful level surface to the Square through new chequer-pattern paving to open up the space and make it more inviting and accessible. The paving will include brick and concrete pavers, recycled from the existing pavement, giving the location a civic character.

A shared surface is proposed between people walking, wheeling and cycling with the cycle route subtly indicated by metal studs in the paving.

The existing character of the site will be enhanced through the retention of the existing Stevie Smith poem mural and the festoon lighting, complemented by new signage announcing the Square's presence.



Removal of up to 50 m² of existing hard surfacing will provide new ecological plant communities which offer an increase in biodiversity, improved human wellbeing, soil health, air quality, and ecological connectivity between local habitats and designated sites. The planting communities will consist of a layered ecology including the structure of existing Lime trees (*Tilia Cordata*), and additional shrubs and climbers to surrounding walls, herbaceous perennials and bulbs.

Each planting area will have the potential to form part of an integrated Sustainable Drainage System (SuDs) design, taking rain-water run-off from surrounding surfaces into planted bioretention areas for the reduction and infiltration of site stormwater.

There is potential to engage young people in co-designing some bespoke patterned paving, creating unique and playful elements within the design as show in this slide.

Electrical points will support a range of uses and the addition of seating and a drinking fountain will promote wellbeing and rest.

Devonshire Square Movement Strategy

The current design response is essentially threefold. Firstly, to enable the movement of cycles through the space, but clearly on the terms of people walking, wheeling and dwelling within. This means not laying out an obvious 'cycle route' but making it reasonably obvious to all users - through comparatively subtle signs and markings - that people on cycles are legitimate users of the space. The designs should avoid imparting any sense of, "This is my space here; that's your space there".

Secondly, it will be important that the design of the interface with Green Lanes enables people on cycles entering and leaving the main carriageway to do so safely. This means ensuring adequate lines of sight and providing a clear space for people on cycles to 'land' on when leaving Green Lanes, and before continuing into the main part of Devonshire Square.



Thirdly, the passage of powered two-wheelers should be discouraged by formal signs on entry, by a layout that clearly prioritises people, and by the appropriate disposition of obstacles to manage speeds and further deter use. In this, it is worth remembering that many of the current powered two-wheeler users are participants in the gig economy and

(a) are often under time pressures and;

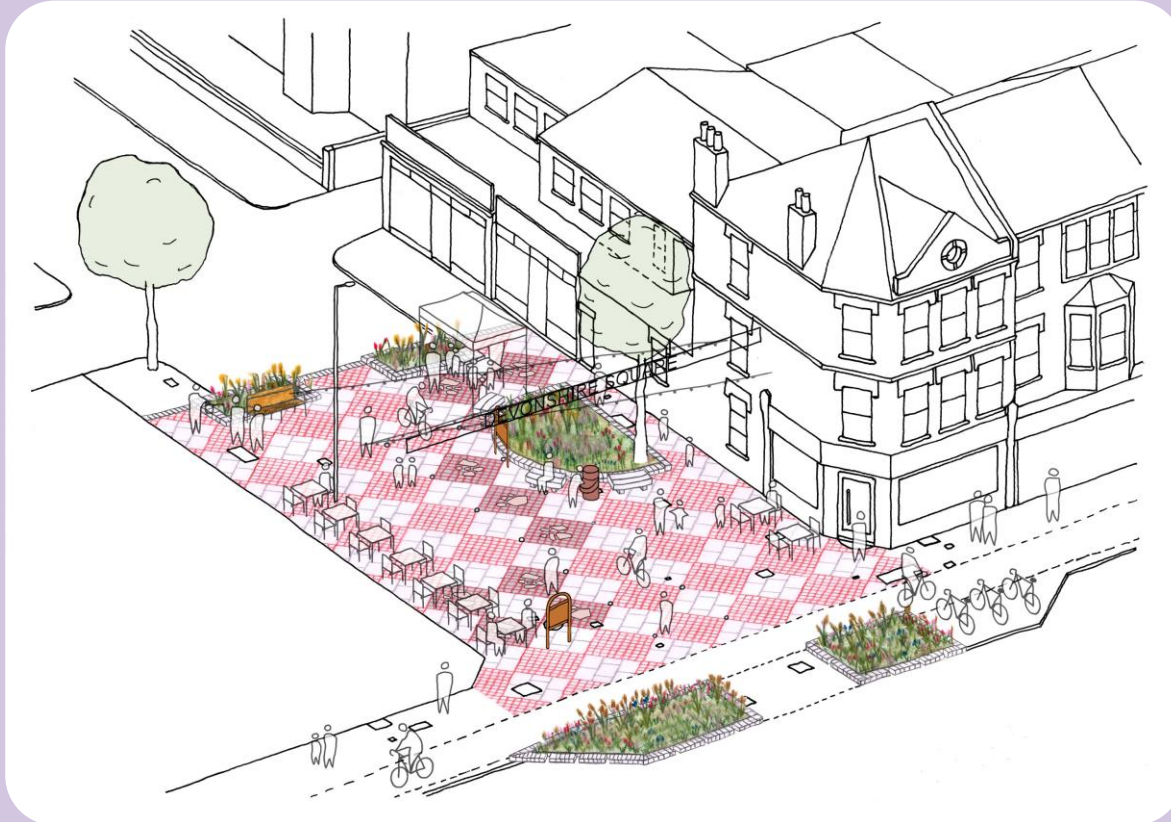
(b) do not have 'employers' to regulate their activity.

The design of Devonshire Square cannot itself definitively resolve this wider and commonplace issues; it can only seek to manage as best it can within the context of meeting other design priorities.

A fourth consideration is the of ensuring parked vehicles at the west end of the square do not unreasonably inhibit the passage of people cycling - or indeed walking and wheeling - into and out of the square. In the first instance, this should be simply through the deployment of double yellow lines and kerbside tags to outlaw waiting or loading at any time.

Your feedback

- Enfield Council invites you to share your comments on the proposed design for Devonshire Square through this [survey](#).





Connecting communities
to create a more vibrant, greener
and healthier Enfield.

